

形状・寸法/特性

Shapes and dimensions/Characteristics

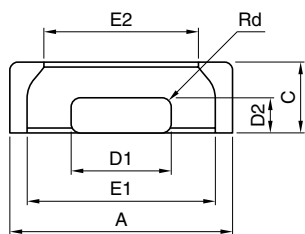


Fig.1

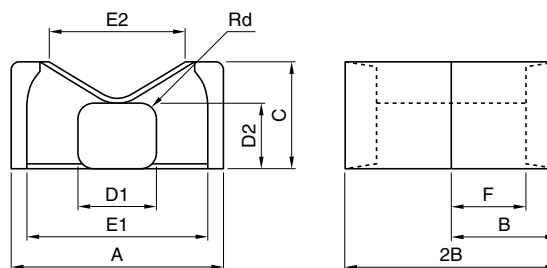


Fig.3

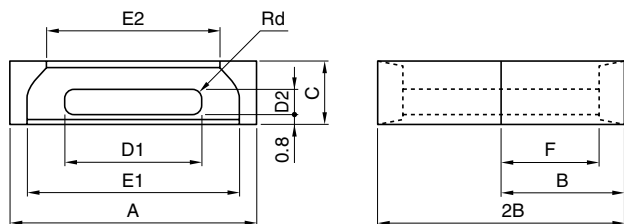


Fig.2



形状 Type	寸法 Dimensions(mm)											Bobbin Core	
	A	2B	B	C	D1	D2	E1 min.	E2 min.	2F min.	F	Rd	Fig.	Fig.
EEPA-9A	9.00±0.20	7.3	3.65±0.10	3.30±0.125	4.25±0.10	2.075±0.125	6.50	5.50	4.30	2.25±0.10	0.4	1 SMD	1
EEPA-10A	10.2±0.2	8.1	4.05±0.15	3.40±0.15	5.00±0.15	1.90±0.10	7.60	6.30	5.10	2.65±0.10	0.7		1
EEPA-13A	13.3±0.25	13.2	6.60±0.20	4.60±0.15	5.60±0.15	2.10±0.10	10.5	8.30	8.80	4.50±0.10	0.7		1
EEPA-17A	17.6±0.3	17.2	8.60±0.20	6.00±0.15	7.70±0.15	2.80±0.10	14.5	11.5	11.8	6.05±0.15	1.0		1
EEPA-19A	19.1±0.35	19.6	9.80±0.20	6.00±0.15	8.40±0.15	2.50±0.10	15.8	13.1	14.2	7.25±0.15	0.9	3	1
EEPA-25A	25.1±0.4	25.0	12.5±0.25	8.00±0.15	11.4±0.2	4.00±0.15	20.65	17.1	17.7	9.00±0.15	1.4	3	1
EEPA-25B	25.0±0.4	22.8	11.4±0.2	6.50±0.15	13.8±0.2	2.50±0.10	20.3	18.2	17.2	8.75±0.15	0.8	2 SMD	2
EEPA-25C	25.0±0.4	22.8	11.4±0.2	12.0±0.2	9.00±0.15	7.50±0.15	18.7	14.0	16.1	8.20±0.15	2.5		3
EEPA-25D	25.0±0.4	30.5	15.3±0.25	12.0±0.2	9.00±0.15	7.50±0.15	18.7	14.0	23.8	12.05±0.15	2.5		3
EEPA-26T	25.8±0.4	29.4	14.7±0.25	8.50±0.15	11.8±0.2	4.50±0.15	20.4	17.2	21.7	11.0±0.15	1.5	3	1
EEPA-27A	27.1±0.45	32.0	16.0±0.25	8.00±0.15	13.0±0.2	4.00±0.15	21.7	18.5	23.7	12.0±0.15	1.4	3	1
EEPA-27B	27.2±0.45	27.0	13.5±0.25	8.00±0.15	13.0±0.2	4.00±0.15	21.7	18.5	18.7	9.50±0.15	1.4		1
EEPA-30A	30.1±0.45	35.0	17.5±0.25	8.00±0.15	15.0±0.2	4.00±0.15	23.6	20.0	25.7	13.0±0.15	1.4		1
EEPA-33B	33.0±0.5	33.0	16.5±0.25	10.0±0.2	15.0±0.2	6.00±0.15	24.5	21.8	21.7	11.0±0.15	2.0		1

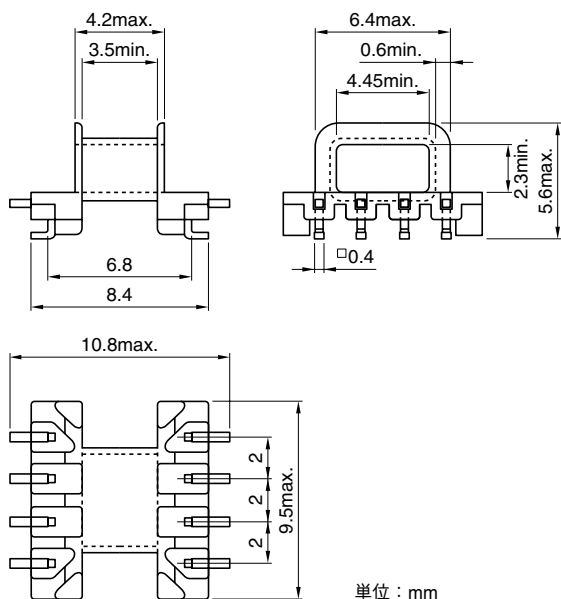
形状 Type	AL value(nH/N²)±25%					コア定数 parametersCore					Weight (g/set)
	MB1	MB3	MB4	MBT1	MC2	C1(mm <sup>-1</sup> )	Le(mm)	Ae(mm <sup>2</sup> )	Amin(mm <sup>2</sup> )	Ve(mm <sup>3</sup> )	
EEPA-9A	926	1070	1070	1270	664	1.79	15.5	8.67	8.48	134	0.77
EEPA-10A	881	1020	1020	1230	624	1.96	18.1	9.22	9.08	167	0.94
EEPA-13A	912	1080	1080	1320	630	2.06	28.3	13.7	11.3	388	2.4
EEPA-17A	1160	1380	1380	1700	793	1.67	38.4	22.9	20.7	879	5.1
EEPA-19A	1030	1160	1160	1530	696	1.95	44.5	22.8	20.3	1010	5.9
EEPA-25A	1640	1890	1890	2460	1100	1.24	55.7	44.8	41.0	2490	14.3
EEPA-25B	1190	1390	1390	1890	849	1.61	50.6	31.5	31.5	1590	9.8
EEPA-25C	2830	3350	3350	4170	1930	0.694	50.0	72.0	62.1	3600	21.2
EEPA-25D	2280	2730	2730	3450	1530	0.908	65.0	71.6	62.1	4650	26.8
EEPA-26T	1730	1930	1930	2620	1150	1.20	63.9	53.1	51.2	3390	18.9
EEPA-27A	1550	1860	1860	2380	1030	1.36	69.4	51.1	48.0	3550	19.9
EEPA-27B	1790	2140	2140	2700	1200	1.15	59.5	51.9	48.8	3080	17.6
EEPA-30A	1660	2190	2190	2550	1100	1.28	75.8	59.2	57.3	4480	25.1
EEPA-33B	2740	3280	3280	4160	1830	0.760	69.4	91.4	86.6	6350	36.4

製品をより正しく、安全にご使用いただくために、さらに詳細な特性・仕様をご確認いただける納入仕様書をぜひご請求ください。  
記載内容は、改良その他により予告なく変更する場合がありますので、あらかじめご了承ください。

形状・寸法

Shapes and dimensions

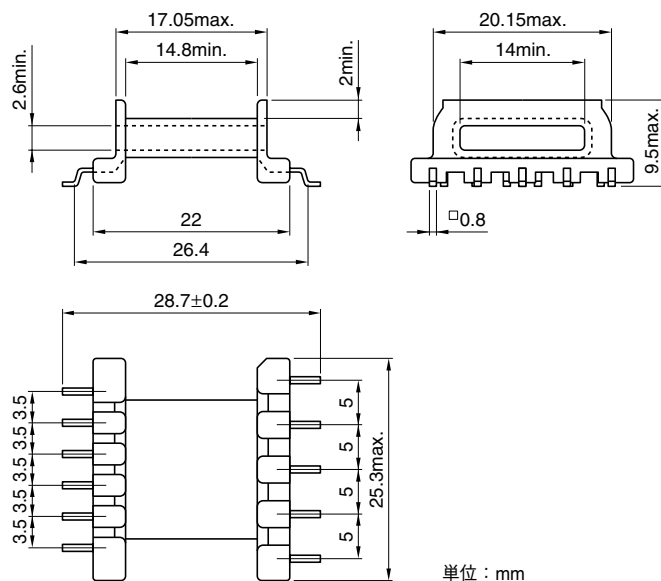
BPA9AD8 type



Terminal	コア方向*	適合コア	
Pin dimensions(mm)	No. of pins	Core direction	Applied core
□0.4×0.2	4-4	H (SMD type)	EEPA-9A

\*H=横使用 Horizontal use

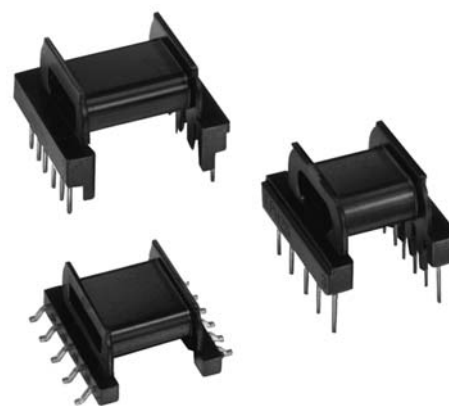
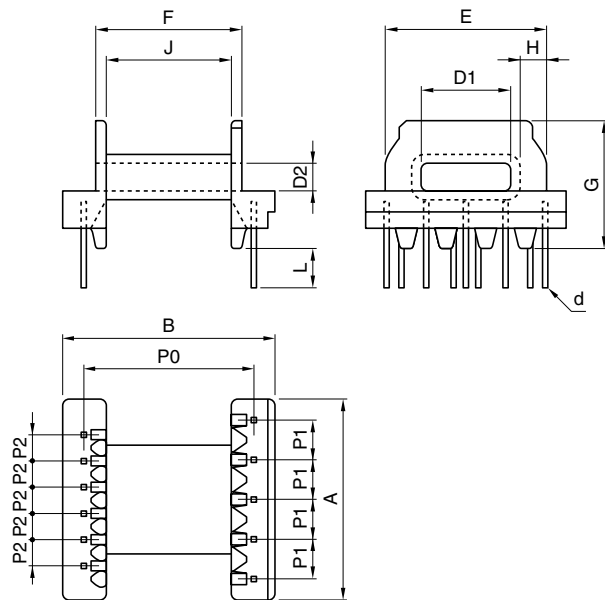
BPA25BP11 type



Terminal	コア方向*	適合コア	
Pin dimensions(mm)	No. of pins	Core direction	Applied core
□0.8×0.2	5-6	H (SMD type)	EEPA-25B

\*H=横使用 Horizontal use

BPA19AP11, BPA25AP11, BPA26AP11 and BPA27AP11 types



品名 Part No.	寸法 Dimensions(mm)														No. of terminal pins	コア方向*2 Core direction	適合コア Applied core
	A max.	B max.	D1*1 min.	D2*1 min.	E*1 max.	F*1 max.	G max.	H min.	J min.	P1	P2	P0	d	L			
BPA19AP11	19.3	20.4	8.75	2.7	15.6	14.0	12.3	2.5	12.0	3.75	2.5	16.25	□0.49	3.9	5-6	H	EEPA-19A
BPA25AP11	25.3	25.0	11.8	4.3	20.6	17.3	16.7	3.1	14.6	5.0	3.75	20.0	∅0.8	3.9	5-6	H	EEPA-25A
BPA26AP11	26.1	29.7	12.2	4.8	20.2	21.4	16.6	3.1	18.8	5.0	3.75	25.0	∅0.8	3.9	5-6	H	EEPA-26T
BPA27AP11	27.2	32.2	13.4	4.3	21.6	23.2	16.7	2.8	20.6	5.0	3.75	27.5	∅0.8	3.9	5-6	H	EEPA-27A

\*1コア勘合面 \*2H=横使用 Horizontal use